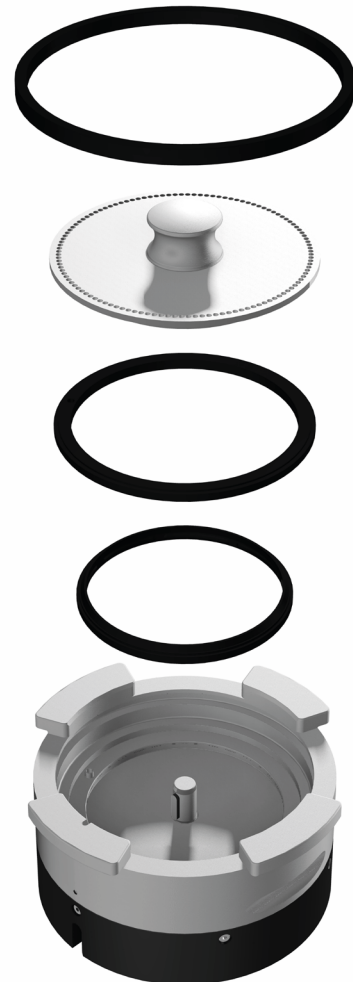
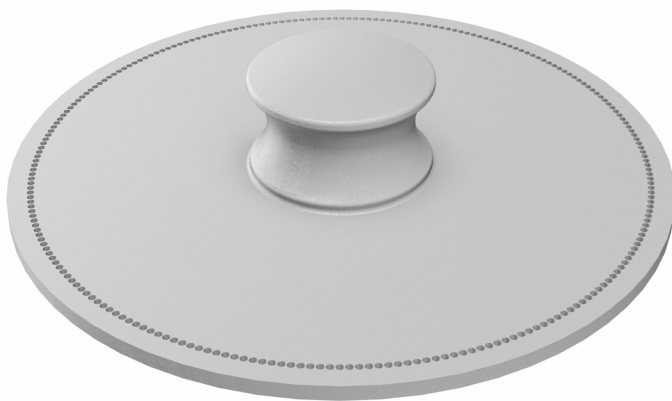


# CONVEYOR DISC (Ø1,5 x 240)

10002.03.0.09

## Key facts:

- Quick and easy replacement
- Ideal for low and precise powder feedrates
- 240 holes
- Volume: 1.424 cm<sup>3</sup>



The Conveyor Disc 10002.03.0.09 is an optional disc for all versions of the Impact Powder Feeders. The use of this Conveyor Disc is recommended when low and precise powder feed rates are required. Replacing the Conveyor Disc is quick and easy.

In order to influence the powder feed rate, the following factors must be considered:

- Volume of Conveyor Disc (number and design of holes)
- Rotating speed of the Conveyor Disc
- Flowability and apparent density of the powder