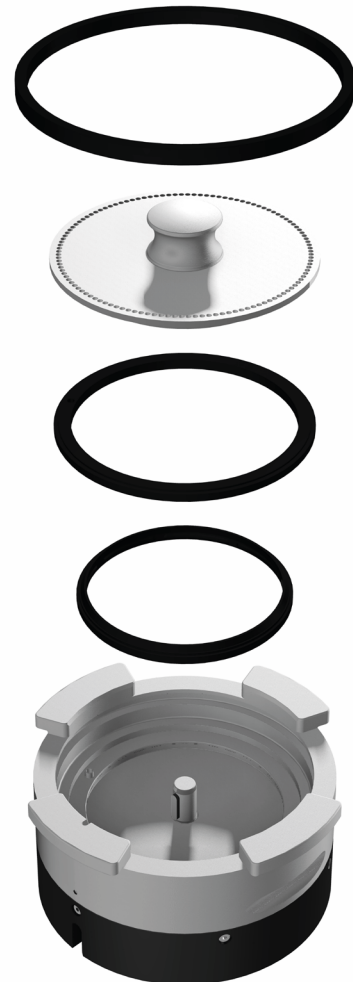
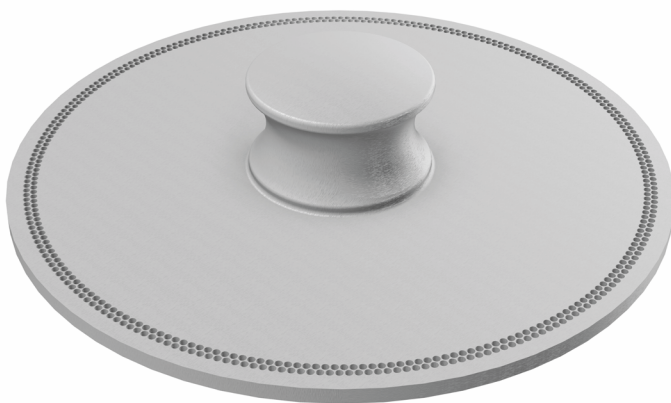


CONVEYOR DISC (Ø1,5 x 492)

10002.03.0.10

Key facts:

- Quick and easy replacement
- Ideal for powders with good flowability
- Homogeneous feed rate and uniform coating
- 492 holes
- Volume: 3.043 cm³



The Conveyor Disc 10002.03.0.10 is an optional disc for all versions of the Impact Powder Feeders. This Conveyor Disc is recommended when using powders with good flowability. Due to the design of the Conveyor Disc, the powder feed rate is more homogeneous and the deposited coating is very uniform. Replacing the Conveyor Disc is quick and easy.

In order to influence the powder feed rate, the following factors must be considered:

- Volume of Conveyor Disc (number and design of holes)
- Rotating speed of the Conveyor Disc
- Flowability and apparent density of the powder