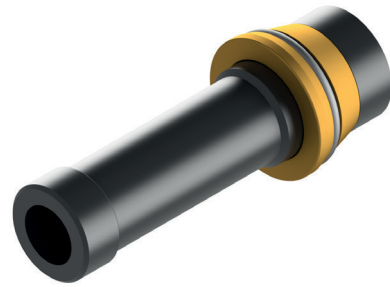


# NOZZLE - IN5 (WC)

10211.00.0.01

**Key facts:**

- High coating efficiency



The Nozzle - IN5 is designed for the ID Coating Device and ID Coating Device V2. Due to its compact length and high expansion ratio, it provides excellent coating efficiency in confined geometries.

The WC nozzle has a high wear resistance and is suitable for very hard materials. It has a low surface roughness on the inner contour. The smallest cross-section corresponds to the OUT1 and OUT2 standard nozzles.



also possible for:  
ID Coating Device  
10107.00.0.00



### Technical data

Expansion ratio	<b>12.4</b>
Total length	<b>55 mm</b>
Material	<b>Tungsten carbide (WC)</b>