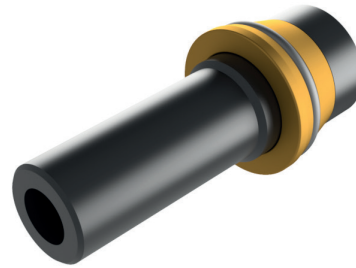


NOZZLE - IN6 (WC)

10212.00.0.01

Key facts:

- Compact design for small bores



The Nozzle - IN6 is designed for the ID Coating Device and ID Coating Device V2. Its short design allows efficient coating of small internal diameters and complex geometries. Operation is only possible in conjunction with water cooling. This greatly reduces wear and tear and the risk of nozzle clogging.

The WC nozzle has a high wear resistance and is suitable for very hard materials. It has a low surface roughness on the inner contour. The smallest cross-section corresponds to the OUT1 and OUT2 standard nozzles.



also possible for:
ID Coating Device
10107.00.0.00



Technical data	
Expansion ratio	6.7
Total length	47 mm
Material	Tungsten carbide (WC)