

**Cold Spray.**  
Wherever You Need It.



Available  
now!

## IMPACT MOBILE SYSTEM

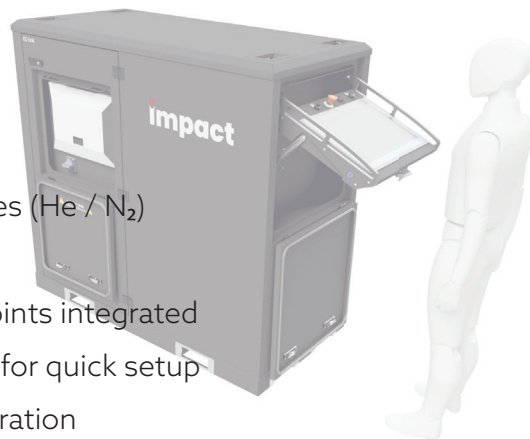
**Portable Cold Spray Technology, Re-engineered for Mobility**

The Impact Mobile System delivers full Cold Spray capability in a transportable, industrial container unit. Designed for R&D, maintenance, and field repair, it includes all major components of the Impact EvoCSII platform in a rugged, weather-protected and modular setup.



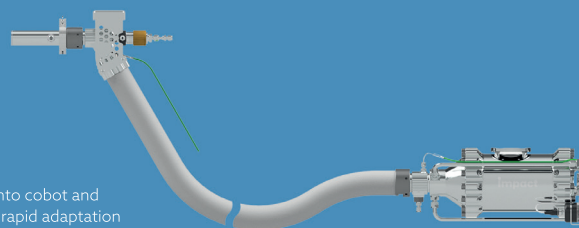
# IMPACT MOBILE SYSTEM

- 1760 × 850 × 1780 mm (L × W × H) | 980 kg
- Full EvoCSII Cold Spray capability with dual process-gas lines (He / N<sub>2</sub>)
- Integrated display - fold-out or detachable for remote use
- Transport-ready via forklift or crane – load hooks and lift points integrated
- All components connected externally by cables and hoses for quick setup
- Weather-protected, industrial-grade design for mobile operation
- Includes Impact Gun EvoCSII, Impact Powder Feeder (60 /80 bar), Powder Swap Container and Central Injector Kit, set of nozzles, accessories and tools



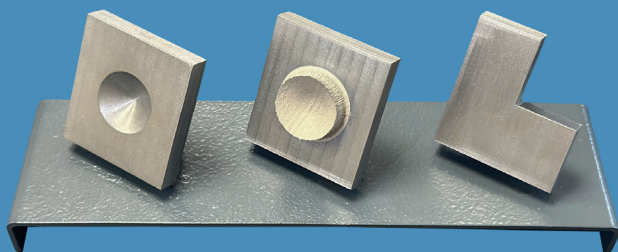
## REPAIR WITHOUT LIMITS

High-performance Cold Spray applications directly on-site



**Portable Adaptor**  
(for flexible integration into cobot and automation setups with rapid adaptation to different operating scenarios)

### IRON & STEEL REPAIR



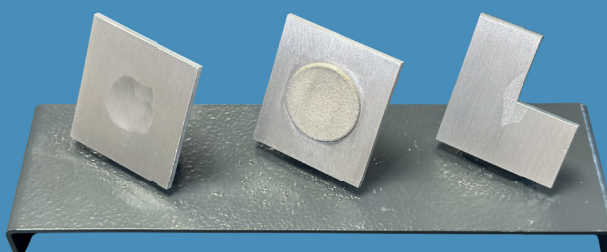
#### CAST IRON + STEEL DIMENSIONAL REPAIR DEMONSTRATOR

**NiCrC-based repair material**

Propelling gas N<sub>2</sub>

- Adhesion strength: >70 MPa
- Deposition rate: 20 g/min
- Porosity: <1 %
- Reduced scrap of high-value castings

### ALUMINIUM REPAIR (Al & Al-Alloys)



#### STRUCTURAL ALUMINIUM REPAIR DEMONSTRATOR

**Al7050 repair material**

Propelling gas N<sub>2</sub>

- Ultimate tensile strength: >375 MPa
- Yield strength: 314 MPa
- Adhesion strength: >260 MPa
- Porosity: <0.5 %
- Elongation: 4 %
- Structural repair for lightweight components

Ready to Bring Repair On-Site? Contact us!

Impact Innovations GmbH | +49 8636 695190-47 | sales@impact-innovations.com | www.impact-innovations.com

**impact**